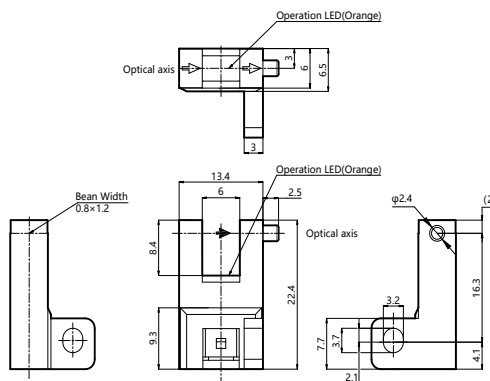


Dimensions



(1)	①	②	③	④
(2)	+V	Output	Output2	0V
(3)	Brown	Black	White	Blue

Model

PU-R68
PU-R68P

Technical parameters

Detection method Through beam

Model NPN PU-R68
PNP PU-R68P

Output mode Light-ON+Dark-ON

Product features

- Through beam
- Fast Response, High Frequency
- IEC IP40

Sensing distance Slot Width: 6mm
Standard target > 1.2*0.8mm (Opaque object)

Light source 940nm infrared light

Differential <0.05mm

Repeat accuracy <0.01mm

Supply power < 5-24V DC±10%

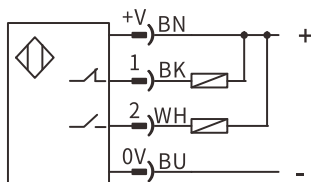
Residual voltage < 1V (Load Current: ≤50mA)

Current consumption <15mA

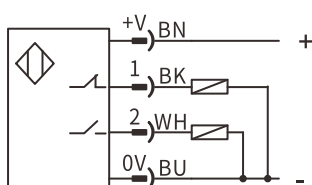
Load current ≤50mA

Connection

NPN



PNP



Circuit protection Reverse polarity connection, Short circuit protection, overload protection

Response frequency > 1kHz

Indicator light Output LED: orange LED

Connection Connector type

Ambient temperature Work:-25°C~+55°C Store:-30°C~+80°C(No dew condensation or icing allowed)

Ambient humidity Work: 5~85%RH, Store: 5~95%RH, (No dew condensation)

Ambient illumination Sunlight: 10,000Lx Lamplight: 3,000Lx

Anti-vibration 10~55Hz double-amplitude 1.5mmX,Y,Z 2h

Withstand voltage 1000VAC,50/60Hz 1min between current-carrying parts and case

Insulation resistance ≥ 20 MΩ (500 VDC, terminals to housings)

Impact resistance 500 m/s² (X, Y, Z directions, 3 times)

Protection degree IEC IP40

Material Housing PBT
Display Cover Polycarbonate (PC)